



## HEALTHCARE



**YOUR SEATING SOLUTION SPECIALISTS**



Proudly 100%  
Australian Owned



## Adjustable Maddison Arm



**AMVASQ**  
Square back



**AMVA**  
Round back  
with optional non-slip feet

**Features:**

- Black polyurethane straight arms.
- Commercial grade foam.
- Height adjustable frame.

**Frame:**

- 4 leg - welded tubular steel.
- Black powder coat finish with chrome leg inserts.

**Seat and back:**

- Fully upholstered.

**Options:**

- Choice of fabric (refer to page 9).
- Chrome finish.
- Non-slip rubber feet.
- Round or square back.

**Weight:**

- 150kg.

**Warranty:**

- 5 year.



## Adjustable Maddison Drop Arm



**AMVDA**  
Round back



**AMVDASQ**  
Square back

**Features:**

- Black polyurethane sloping arms.
- Commercial grade foam.
- Height adjustable frame.

**Frame:**

- 4 leg - welded tubular steel.
- Black powder coat finish with chrome leg inserts.

**Seat and back:**

- Fully upholstered.

**Options:**

- Choice of fabric (refer to page 9).
- Chrome finish.
- Non-slip rubber feet.
- Round or square back

**Weight:**

- 150kg.

**Warranty:**

- 5 year.



## Adjustable BIG Maddison Arm

### Features:

- Black polyurethane straight arms.
- Commercial grade foam.
- Extra wide (50mm) seat and back.
- Height adjustable frame.

### Frame:

- 4 leg - welded tubular steel.
- Black powder coat finish with chrome leg inserts.

### Seat and back:

- Fully upholstered.

### Options:

- Choice of fabric (refer to page 9).
- Chrome finish.
- Non-slip rubber feet.
- Round or square back.

### Weight:

- 150kg.

### Warranty:

- 5 year.



**ABMVASQ**  
Square back

## BIG Maddison

### Features:

- Commercial grade foam.
- Extra wide (50mm) seat and back.

### Frame:

- 4 leg - welded tubular steel.
- Black powder coat finish.

### Seat and back:

- Fully upholstered.

### Options:

- Black polyurethane straight arms.
- Choice of fabric (refer to page 9).
- Chrome finish.
- Non-slip rubber feet.
- Round or square back.

### Weight:

- 150kg.

### Warranty:

- 5 year.



**BMVA**  
Round back  
with optional straight arms



**BMVSQ**  
Square back

## Bella Medium Back



**BELLA01**  
Medium back  
with graphite ripple finish

**Features:**

- Antibacterial moulded seat foam.
- Black leather arm rests.
- Height adjustable frame.
- Rear leg wheels for easy maneuverability.
- Rear utility rail.
- Tri-layer back foam and head lumbar.

**Frame:**

- 4 leg - heavy duty welded tubular steel.
- Powder coat finish with chrome leg inserts.
- Colours: Beige, graphite ripple or silver.

**Seat and back:**

- Fully upholstered.

**Fabric:**

- Wortley Crypton or Wortley Tussuto vinyl ranges only.

**Options:**

- Laminate side table (removable).

**Weight:**

- 150kg.

**Warranty:**

- 5 year.



## Bella High Back



**BELLA02**  
High back with beige finish  
and optional side table

**Features:**

- Antibacterial moulded seat foam.
- Black leather arm rests.
- Height adjustable frame.
- Rear leg wheels for easy maneuverability.
- Rear utility rail.
- Tri-layer back foam and head lumbar.

**Frame:**

- 4 leg - heavy duty welded tubular steel.
- Powder coat finish with chrome leg inserts.
- Colours: Beige, graphite ripple or silver.

**Seat and back:**

- Fully upholstered.

**Fabric:**

- Wortley Crypton or Wortley Tussuto Vinyl ranges only.

**Options:**

- Laminate side table (removable).

**Weight:**

- 150kg.

**Warranty:**

- 5 year.



## Daphne

### Features:

- Cosmetic back stitching.
- Commercial grade foam.
- Stackable.
- Two piece seat and back.

### Frame:

- 4 leg - layered veneer.
- Natural finish.

### Seat and back:

- Fully upholstered.

### Options:

- Choice of fabric (refer to page 9).
- Frame restrain (refer to price list).

### Weight:

- 110kg.

### Warranty:

- 3 year.



DAPH

## Ergo Saddle Stool

### Features:

- Chrome base with stainless steel hooded castors.
- Chrome height adjustable 140mm gas lift.
- Ergonomic 2 lever mechanism.
- Moulded seat foam.
- Seat tilt adjustment.

### Seat and back:

- Fully upholstered long nose seat and back - black vinyl.
- Chrome back upright bar.

### Options:

- ERGSAD model available in short nose only.
- ERGSADBACK model available in short or long nose.

### Weight:

- 110kg.

### Warranty:

- 3 year.



ERGSAD

ERGSADBACK



## Medical Stool Drafting



MSD



MST  
(140mm Gas)

**Features:**

- Antibacterial moulded foam.
- Antibacterial, stain, bleach and alcohol resistant vinyl.
- Chrome adjustable foot ring.
- Chrome base.
- Chrome height adjustable 270mm gas lift.
- PU soft wheel castors.
- Single lever mechanism.

**Seat:**

- Fully upholstered.

**Options:**

- Alternate chrome gas lift (refer to price list).
- Choice of Wortley Studio Encore vinyl range.

**Weight:**

- 110kg.

**Warranty:**

- 5 year.



## Murray



MURRAY

**Features:**

- Commercial grade foam.
- Commercial grade timber frame.
- Polished timber base and legs with button glides.
- Tri-layer back foam and head lumbar.
- Tri-layer seat foam.

**Seat and back:**

- Fully upholstered.

**Options:**

- Choice of fabric (refer to page 9).
- Choice of stain colours.

**Weight:**

- 120kg.

**Warranty:**

- 3 year.



## Patterson

### Features:

- Commercial grade foam.
- Stackable.
- Timber frame with arms.
- Two piece seat and back.

### Frame:

- 4 leg - layered veneer.
- Natural finish.

### Seat and back:

- Fully upholstered.

### Options:

- Choice of fabric (refer to page 9).
- Frame restrain (refer to price list).
- Timber frame without arms.

### Weight:

- 110kg.

### Warranty:

- 3 year.



PATT



PATTNA  
No arms

## Primrose

### Features:

- Commercial grade foam.
- Stackable.
- Timber frame with arms.
- Two piece seat and back.

### Frame:

- 4 leg - layered veneer.
- Natural finish.

### Seat and back:

- Fully upholstered.

### Options:

- Choice of fabric (refer to page 9).
- Frame restrain (refer to price list).

### Weight:

- 110kg.

### Warranty:

- 3 year.



PRIM



## Riley



**RIL02**  
High back with  
graphite ripple finish



**RIL01**  
Low back with  
graphite ripple finish

### Features:

- Antibacterial moulded seat foam.
- Black polyurethane arm rests.
- Extra wide seat and back.
- Height adjustable frame.

### Frame:

- 4 leg - heavy duty welded tubular steel.
- Powder coat finish with chrome leg inserts.
- Colours: Beige, graphite ripple or silver.

### Seat and back:

- Fully upholstered.

### Options:

- Choice of fabric (refer to page 9).
- Low or high back.

### Weight:

- 150kg.

### Warranty:

- 5 year.



**All chairs are 100% Australian manufactured to the highest standard and incorporate the following premium materials:**

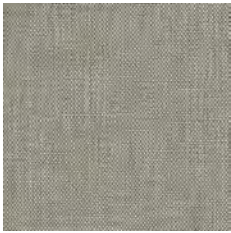
- Commercial grade timber and steel frames.
- Premium commercial grade foam.
- Upholstered covers are overlapped where required to stop fraying.
- Upholstered covers are top stitched for additional strength where required.
- For a complete list of sizes and dimensions please visit [www.officeseating.com.au](http://www.officeseating.com.au)
- All products are suitable for multiple applications, ranging from but not limited to education, general office, healthcare and hospitality.

Due to our policy of continuous product improvement, O.S.A Pty. Ltd. reserves the right to make changes on specifications without notice.

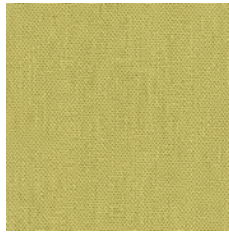


## OSA House Fabrics

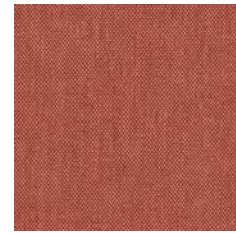
Fabric colours shown are an indication and should only be used as a guide.



**Birch**



**Citrus**



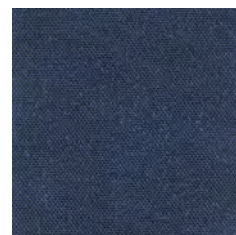
**Fire**



**Poppy**



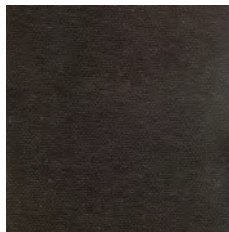
**Teal**



**Navy**



**Falcon**



**Carbon**



**Hathaway  
Charcoal**



**Hathaway  
Navy**

**Content:** 100% Polyester    **Width:** 137cm

**Performance:** Heavy Commercial

## Fabric Suppliers

**Innova:** [innova.com.au](http://innova.com.au)  
**Instyle:** [instyle.com.au](http://instyle.com.au)  
**Laine:** [laine.com.au](http://laine.com.au)  
**Sustainable Living:** [sustainablelivingfabrics.com.au](http://sustainablelivingfabrics.com.au)  
**Macquarie:** [macquarietextiles.com.au](http://macquarietextiles.com.au)

**Svenska:** [svenskakj.com.au](http://svenskakj.com.au)  
**Vyfab:** [vyfab.com](http://vyfab.com)  
**Warwick:** [warwick.com.au](http://warwick.com.au)  
**Wortley:** [wgshowroom.com.au](http://wgshowroom.com.au)  
**Woven Image:** [wovenimage.com](http://wovenimage.com)

Most commonly used fabric suppliers.



Proudly 100%  
Australian Owned

**ENQUIRES: 03 9761 7110**  
**WWW.OFFICESEATING.COM.AU**



**Beam Seating**



**Clerical & Managerial**



**Education**



**Executive**



**Hospitality**



**Ottoman**



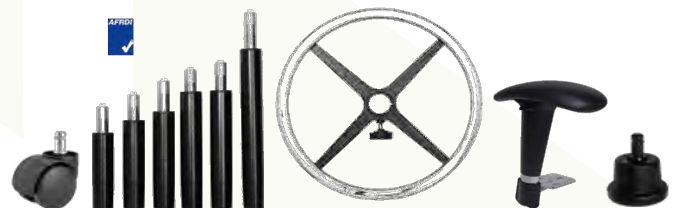
**Soft Furnishings**



**Stools**



**Visitor**



**Accessories**

# Notes



Proudly 100%  
Australian Owned

ENQUIRES: 03 9761 7110  
[WWW.OFFICESEATING.COM.AU](http://WWW.OFFICESEATING.COM.AU)

Distributed by:



**YOUR SEATING SOLUTION SPECIALISTS**

© 2017 OSA All Rights Reserved

Rev\_HC002