



## STOOLS



**YOUR SEATING SOLUTION SPECIALISTS**



Proudly 100%  
Australian Owned



## Carla Low Back Stool



CARSTLB



CARSTLB/W  
White laminate

**Features:**

- One piece seat and back.

**Frame:**

- 4 leg - tubular steel.
- Chrome finish.

**Seat and back:**

- Timber veneer.
- Colours: Natural, wenghe, zebra or white laminate.

**Options:**

- 650mm or 750mm seat height.

**Weight:**

- 100kg.

**Warranty:**

- 1 year.



## Carla High Back Stool



CARSTHB

**Features:**

- One piece seat and back.

**Frame:**

- 4 leg - tubular steel.
- Chrome finish.

**Seat and back:**

- Timber veneer.
- Colours: Natural, wenghe, zebra or white laminate.

**Options:**

- 650mm or 750mm seat height.

**Weight:**

- 100kg.

**Warranty:**

- 1 year.



## Colorado Stool

### Features:

- Commercial grade foam.

### Frame:

- 4 leg - tubular steel.

### Seat and back:

- Upholstered seat.

### Options:

- 650mm or 750mm seat height.

- **COLSTU1**

Back: Natural oak.

Frame: Black, charcoal or cool grey powder coat.

Seat: Black, charcoal or white vinyl.

- **COLSTU2**

Back: Walnut.

Frame: Black powder coat.

Seat: Black vinyl.

### Weight:

- 100kg.

### Warranty:

- 1 year.



**COLSTU1**  
White vinyl seat  
with cool grey powder coat finish



**COLSTU2**  
Black vinyl seat  
with black powder coat finish

## Dove Stool

### Features:

- Commercial grade foam.

### Frame:

- 4 leg - brushed stainless steel.

### Seat and back:

- Fully upholstered - black vinyl.

### Options:

- 660mm or 760mm height.

### Weight:

- 100kg.

### Warranty:

- 1 year.



**DOVST**



Proudly 100%  
Australian Owned

ENQUIRES: 03 9761 7110  
WWW.OFFICESEATING.COM.AU

## Elite Stool



ELISTUPH2



**ELISTVEN**  
Natural oak seat  
with optional chrome finish

**Features:**

- 680mm seat height.

**Frame:**

- Sled - rod steel.
- Black powder coat finish.

**Seat:**

- Timber veneer seat - natural oak.
- Upholstered seat - black or white vinyl.

**Options:**

- Chrome finish.
- Walnut timber veneer seat.
- White powder coat finish.

**Weight:**

- 100kg.

**Warranty:**

- 1 year.



## Ergo Saddle Stool



ERGSADBACK



ERGSAD

**Features:**

- Chrome base with stainless steel hooded castors.
- Chrome height adjustable 140mm gas lift.
- Ergonomic 2 lever mechanism.
- Moulded seat foam.
- Seat tilt adjustment.

**Seat and back:**

- Fully upholstered long nose seat and back - black vinyl.
- Chrome back upright bar.

**Options:**

- **ERGSAD** model available in short nose only.
- **ERGSADBACK** model available in short or long nose.

**Weight:**

- 110kg.

**Warranty:**

- 3 year.



## Fleur Stool

### Features:

- 780mm seat height.
- Suitable for outdoor use.
- UV resistant.

### Frame:

- 4 leg - tubular aluminum.

### Seat and back:

- Synthetic wicker with wire core.
- Colours: Black, coffee, honey or navy blue.

### Weight:

- 100kg.

### Warranty:

- 2 year.



**FLEURST**

## Haley Stool

### Features:

- Mesh look back.
- Stackable.
- Suitable for outdoor use.
- Two piece polypropylene seat.

### Frame:

- 4 leg - tubular steel.
- Chrome finish.

### Seat and back:

- Polypropylene.
- Colours: Black, blue, green, grey, red or white.

### Options:

- Choice of fabric (refer to page 16).
- Seat and or back upholstery.

### Weight:

- 110kg.

### Warranty:

- 5 year.



**HALST/S**  
Seat upholstery



**HALST**  
No upholstery

## Hamilton Bar Stool



HSB

**Features:**

- Chrome narrow leg base with button glides.
- Chrome stem and fixed foot ring.
- Swivel plate.

**Seat:**

- Fully upholstered.

**Options:**

- Choice of fabric (refer to page 16).

**Weight:**

- 110kg.

**Warranty:**

- 5 year.



## Hamilton Drafting Stool



HSD



HST  
(140mm Gas)

**Features:**

- Black 270mm height adjustable gas lift.
- Black base and castors.
- Chrome adjustable foot ring.
- Single lever mechanism.

**Seat:**

- Fully upholstered.

**Options:**

- Alternate black or chrome bases (refer to page 17).
- Alternate black or chrome gas lifts (refer to page 17).
- Alternate castors or glides (refer to page 17).
- Choice of fabric (refer to page 16).

**Weight:**

- 110kg.

**Warranty:**

- 5 year.



## Hunter Stool

### Features:

- Stackable.

### Frame:

- Sled - rod steel.
- Chrome finish.

### Seat and back:

- Moulded polypropylene.
- Colours: Black or white.

### Options:

- Choice of fabric (refer to page 16).
- Seat and or back upholstery.

### Weight:

- 110kg.

### Warranty:

- 5 year.



**HUNST/S**  
Seat upholstery



**HUNST**  
No upholstery



**HUNST/B**  
Back upholstery

## Lark Stool

### Features:

- One piece shell.
- Stackable.
- Suitable for outdoor use.
- UV protected, 100% recyclable.

### Frame:

- 4 leg - stainless steel.

### Seat and back:

- Moulded polypropylene.
- Colours: Avocado, black, blue, chocolate, latte, orange, red or white.

### Options:

- Choice of fabric (refer to page 16).
- Seat upholstery.

### Weight:

- 100kg.

### Warranty:

- 3 year.



**LARKST/S**  
Seat upholstery



**LARKST**  
No upholstery



Proudly 100%  
Australian Owned

ENQUIRES: 03 9761 7110  
WWW.OFFICESEATING.COM.AU

## Lucy Stool



LUCYST

**Features:**

- One piece ply.
- Stackable.

**Frame:**

- 4 leg - tubular steel.
- Chrome finish.

**Seat and back:**

- Laminated timber.
- Colours: Natural, wenghe or zebra.

**Weight:**

- 100kg.

**Warranty:**

- 1 year.



## Maddison Stool



MST  
Round back



MSTSQ  
Square back

**Features:**

- Commercial grade foam.
- Stackable.

**Frame:**

- 4 leg - welded tubular steel.
- Black powder coat finish.

**Seat and back:**

- Fully upholstered.

**Options:**

- Choice of fabric (refer to page 16).
- Chrome finish.
- Non-slip rubber feet.
- Round or square back.

**Weight:**

- 120kg.

**Warranty:**

- 5 year.





## Maddison Drop Arm Stool

### Features:

- Commercial grade foam.
- Polyurethane drop arm.

### Frame:

- 4 leg - welded tubular steel.
- Black powder coat finish.

### Seat and back:

- Fully upholstered.

### Options:

- Choice of fabric (refer to page 16).
- Chrome finish.
- Non-slip rubber feet.
- Round or square back.

### Weight:

- 120kg.

### Warranty:

- 5 year.



**MSTDASQ/C**  
Square back drop arms  
with optional chrome finish



**MSTDA**  
Round back drop arms  
with optional chrome finish

## Medical Stool Drafting

### Features:

- Antibacterial moulded foam.
- Antibacterial, stain, bleach and alcohol resistant vinyl.
- Chrome adjustable foot ring.
- Chrome base.
- Chrome height adjustable 270mm gas lift.
- PU soft wheel castors.
- Single lever mechanism.

### Seat:

- Fully upholstered.

### Options:

- Alternate chrome gas lift (refer to page 17).
- Choice of Wortley Studio Encore vinyl range.

### Weight:

- 110kg.

### Warranty:

- 5 year.



**MSD**



**MST**  
(140mm Gas)

## Moona Drafting Stool



MOOND

**Features:**

- Black 270mm height adjustable gas lift.
- Black base and castors.
- Chrome adjustable foot ring.
- Commercial grade foam.
- Cosmetic stitching.
- One piece ply.
- Single lever mechanism.

**Seat and back:**

- Fully upholstered.

**Options:**

- Alternate black or chrome bases (refer to page 17).
- Alternate black or chrome gas lifts (refer to page 17).
- Alternate castors or glides (refer to page 17).
- Choice of fabric (refer to page 16).

**Weight:**

- 120kg.

**Warranty:**

- 3 year.



## Moona Low Back Stool



MOONLB

**Features:**

- Commercial grade foam.
- Cosmetic stitching.
- One piece ply.
- Stackable.

**Frame:**

- Sled - tubular steel.
- Chrome finish.

**Seat and back:**

- Fully upholstered.

**Options:**

- 650mm or 750mm seat height.
- Choice of fabric (refer to page 16).

**Weight:**

- 120kg.

**Warranty:**

- 5 year.



## Moona High Back Stool

### Features:

- Commercial grade foam.
- Cosmetic stitching.
- One piece ply.
- Stackable.

### Frame:

- Sled - tubular steel.
- Chrome finish.

### Seat and back:

- Fully upholstered.

### Options:

- 650mm or 750mm seat height.
- Choice of fabric (refer to page 16).

### Weight:

- 120kg.

### Warranty:

- 5 year.



MOONHB

## PU Drafting Stool

### Features:

- Black 270mm height adjustable gas lift.
- Black base and castors.
- Chrome adjustable foot ring.
- Ring activated, swivel plate mechanism.

### Seat:

- Black polyurethane.

### Options:

- Alternate black or chrome bases (refer to page 17).
- Alternate black or chrome gas lifts (refer to page 17).
- Alternate castors or glides (refer to page 17).

### Weight:

- 110kg.

### Warranty:

- 3 year.



PSD

PST  
(140mm Gas)

## PU Industrial Drafting Stool



PUD

**Features:**

- Black 270mm height adjustable gas lift.
- Black base and castors.
- Chrome adjustable foot ring.
- Ergonomic 3 lever heavy duty mechanism with tension adjustment.

**Seat and back:**

- Black polyurethane.

**Options:**

- Alternate black or chrome bases (refer to page 17).
- Alternate black or chrome gas lifts (refer to page 17).
- Alternate castors or glides (refer to page 17).

**Weight:**

- 120kg.

**Warranty:**

- 3 year.



## PU Large Industrial Stool



PULD

**Features:**

- Black 270mm height adjustable gas lift.
- Black base and castors.
- Chrome adjustable foot ring.
- Ergonomic 3 lever heavy duty mechanism with tension adjustment.
- Large seat.
- Tulip shaped back.

**Seat and back:**

- Black polyurethane.

**Options:**

- Alternate black or chrome bases (refer to page 17).
- Alternate black or chrome gas lifts (refer to page 17).
- Alternate castors or glides (refer to page 17).

**Weight:**

- 120kg.

**Warranty:**

- 3 year.



## PU Square Industrial Stool

### Features:

- Black 270mm height adjustable gas lift.
- Black base and castors.
- Chrome adjustable foot ring.
- Ergonomic 3 lever heavy duty mechanism with tension adjustment.
- Square style seat and back.

### Seat and back:

- Black polyurethane.

### Options:

- Alternate black or chrome bases (refer to page 17).
- Alternate black or chrome gas lifts (refer to page 17).
- Alternate castors or glides (refer to page 17).

### Weight:

- 120kg.

### Warranty:

- 3 year.



**PUSQD**  
with optional glides

## PU Sit Drafting Stool

### Features:

- Black 270mm height adjustable gas lift.
- Black base and castors.
- Chrome adjustable foot ring.
- Ergonomic 2 lever mechanism.
- Seat tilt adjustment.

### Seat:

- Black polyurethane.

### Options:

- Alternate black or chrome bases (refer to page 17).
- Alternate black or chrome gas lifts (refer to page 17).
- Alternate castors or glides (refer to page 17).

### Weight:

- 110kg.

### Warranty:

- 3 year.



**PUSITD**



**PUSIT**  
(200mm Gas)

## PU Saddle Drafting Stool



PUSADD



PUSAD  
(200mm Gas)

**Features:**

- Black base and chrome castors.
- Chrome 270mm height adjustable gas lift.
- Chrome adjustable foot ring.
- Ring activated mechanism.
- Saddle style seat.

**Seat:**

- Black polyurethane.

**Options:**

- Alternate black or chrome bases (refer to page 17).
- Alternate black or chrome gas lifts (refer to page 17).
- Alternate castors or glides (refer to page 17).

**Weight:**

- 110kg.

**Warranty:**

- 3 year.



## PU Stand Drafting Stool



PUSTANDD



PUSTAND  
(200mm Gas)

**Features:**

- Black 270mm height adjustable gas lift.
- Black base and castors.
- Chrome adjustable foot ring.
- Ergonomic 2 lever mechanism.
- Seat tilt adjustment.

**Seat:**

- Black polyurethane.

**Options:**

- Alternate black or chrome bases (refer to page 17).
- Alternate black or chrome gas lifts (refer to page 17).
- Alternate castors or glides (refer to page 17).

**Weight:**

- 110kg.

**Warranty:**

- 3 year.



## PU Tractor Drafting Stool

### Features:

- Black 270mm height adjustable gas lift.
- Black base and castors.
- Chrome adjustable foot ring.
- Large tractor style seat.
- Ring activated mechanism.

### Seat:

- Black polyurethane.

### Options:

- Alternate black or chrome bases (refer to page 17).
- Alternate black or chrome gas lifts (refer to page 17).
- Alternate castors or glides (refer to page 17).

### Weight:

- 110kg.

### Warranty:

- 3 year.



**PUTRAC**  
(200mm Gas)

**PUTRACD**

## Suzie Stool

### Features:

- Commercial grade foam.

### Frame:

- 4 leg - square tubular brushed stainless steel finish.

### Seat:

- Upholstered vinyl seat.
- Colours: Black, blue, brown, green, off-white, orange or red.

### Options:

- 650mm or 750mm seat height.
- Polished stainless finish.

### Weight:

- 100kg.

### Warranty:

- 1 year.



**SUZIE**  
Brushed stainless finish.

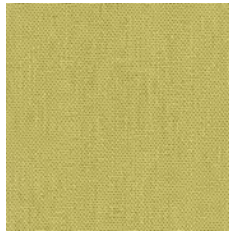


## OSA House Fabrics

Fabric colours shown are an indication and should only be used as a guide.



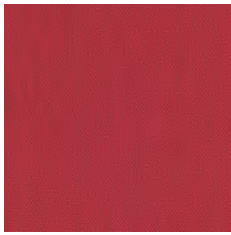
**Birch**



**Citrus**



**Fire**



**Poppy**



**Teal**



**Navy**



**Falcon**



**Carbon**



**Hathaway  
Charcoal**



**Hathaway  
Navy**

**Content:** 100% Polyester    **Width:** 137cm

**Performance:** Heavy Commercial

## Fabric Suppliers

**Innova:** [innova.com.au](http://innova.com.au)  
**Instyle:** [instyle.com.au](http://instyle.com.au)  
**Laine:** [laine.com.au](http://laine.com.au)  
**Sustainable Living:** [sustainablelivingfabrics.com.au](http://sustainablelivingfabrics.com.au)  
**Macquarie:** [macquarietextiles.com.au](http://macquarietextiles.com.au)

**Svenska:** [svenskakj.com.au](http://svenskakj.com.au)  
**Vyfab:** [vyfab.com](http://vyfab.com)  
**Warwick:** [warwick.com.au](http://warwick.com.au)  
**Wortley:** [wgshowroom.com.au](http://wgshowroom.com.au)  
**Woven Image:** [wovenimage.com](http://wovenimage.com)

Most commonly used fabric suppliers.



## Components



**Standard - Black Bases**

**BASE540B** 540mm Diam.  
**BASE640B/2** 640mm Diam. (AFRDI approved)  
**BASE700B** 700mm Diam.



**Standard - Chrome Bases**

**BASE600C** 600mm Diam.  
**BASE660C** 660mm Diam.  
**BASE700C** 700mm Diam. (AFRDI approved)



**Narrow Leg Arch - Black Base**

**BASE690B** 690mm Diam.



**Narrow Leg Arch - Chrome Base**

**BASE660C** 660mm Diam.



**Black castors**

**CAST50** 50mm Standard - 30kg.  
 (AFRDI approved)  
**CAST60** 60mm Standard - 40kg.  
**CASTF** 50mm Friction - 30kg.  
 (restricts movement when unseated)  
**CASTHD** 50mm Heavy Duty - 60kg.  
**CASTLB** 50mm Load Brake - 30kg.  
 (restricts movement when seated)  
**CASTMB** 50mm Manual Brake - 30kg.  
 (manually lockable to stop all movement)



**Single Wheel Skate Castor**

**CASTSK** 75mm Clear Polyurethane - 60kg.  
 (non marking).



**Soft Wheel / PU Castors**

**CASTSW** 50mm with PU Tread - 30kg.  
 (AFRDI approved)  
**CASTSWF** 50mm Friction with PU Tread - 30kg.  
 (restricts all movement).  
**CASTSWLB** 50mm Load Brake with PU Tread - 30kg.  
 (restricts movement when seated).  
**CASTSWULB** 50mm Unload Brake with PU Tread - 30kg.  
 (restricts movement when unseated).  
**CASTMB** 50mm Manual Brake with PU Tread - 30kg.  
 (manually lockable to stop all movement).



**Black Unhooded Castor**

**CASTUH** 50mm Unhooded - 30kg.



**Black Glide**

**CASTGL** 57mm Diameter.



**Chrome Castor**

**CASTCHR** 50mm Chrome look Hood & Shroud -



**Stainless Steel Hooded Castor**

**CASTSS** 50mm Polished Stainless Steel Hood - 30kg.



**Drafting Kits**

**DKIT** 270mm Black Gas & Foot Ring  
**DKITCHR** 270mm Chrome Gas & Foot Ring



**Gas Lifts - Black**

**GL80B** 80mm  
**GL100B** 100mm  
**GL140B** 140mm  
**GL200B** 200mm  
**GL270B** 270mm  
 (AFRDI approved)

**GL140BH/D** 140mm - Heavy Duty



**Gas Lifts - Chrome**

**GL80C** 80mm  
**GL100C** 100mm  
**GL140C** 140mm  
**GL200C** 200mm  
**GL270C** 270mm  
 (AFRDI approved)



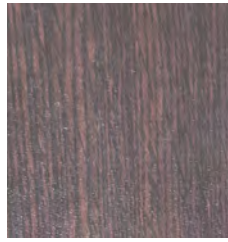
Proudly 100%  
 Australian Owned

**ENQUIRES: 03 9761 7110**  
**WWW.OFFICESEATING.COM.AU**

## Veneer Colours



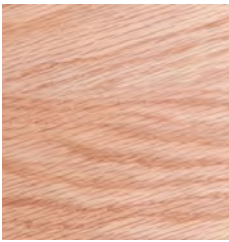
**Natural**



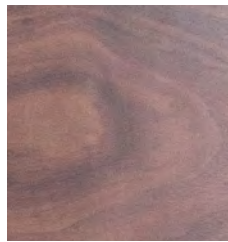
**Wenghe**



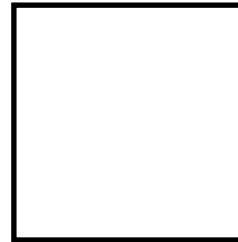
**Zebra**



**Natural Oak**



**Walnut**



**HPL White**

Veneer colours shown will vary depending on the type of timber and the timber grain.  
These images are an indication and should only be used as a guide.

**All chairs are 100% Australian manufactured to the highest standard and incorporate the following premium materials:**

- Commercial grade timber and steel frames.
- Premium commercial grade foam.
- Upholstered covers are overlapped where required to stop fraying.
- Upholstered covers are top stitched for additional strength where required.
- For a complete list of sizes and dimensions please visit [www.officeseating.com.au](http://www.officeseating.com.au)
- All products are suitable for multiple applications, ranging from but not limited to education, general office, healthcare and hospitality.

Due to our policy of continuous product improvement, O.S.A Pty. Ltd. reserves the right to make changes on specifications without notice.



**Beam Seating**



**Clerical & Managerial**



**Education**



**Executive**



**Healthcare**



**Hospitality**



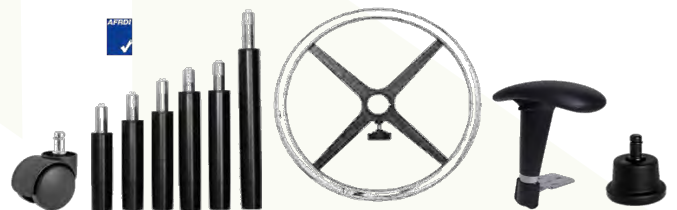
**Ottoman**



**Soft Furnishings**



**Visitor**



**Accessories**



Distributed by:



**YOUR SEATING SOLUTION SPECIALISTS**

© 2017 OSA All Rights Reserved

Rev\_ST002