



VISITOR



YOUR SEATING SOLUTION SPECIALISTS



Proudly 100%
Australian Owned



Acadia



ACADIA

Features:

- Commercial grade foam.
- Integrated linking system.
- Polypropylene arms.
- Stackable.

Frame:

- 4 leg - tubular steel.
- Silver powder coat finish.

Seat and back:

- Fully upholstered back.
- Upholstered seat with polypropylene under pan.

Options:

- Black powder coat finish.
- Choice of fabric (refer to page 26).

Weight:

- 110kg.

Warranty:

- 5 year.



Adapt



ADAPV

Features:

- Antibacterial moulded back foam with lumber.
- Antibacterial moulded seat foam with air cell technology.
- Medium back.
- Ratchet back height adjustment.

Frame:

- Cantilever - tubular steel.
- Black powder coat finish.

Seat and back:

- Fully upholstered seat.
- Upholstered back with polypropylene outer shell.

Options:

- Choice of fabric (refer to page 26).

Weight:

- 120kg.

Warranty:

- 5 year.



Alder

Features:

- Commercial grade foam.
- Cosmetic stitching on seat and back.
- Extra wide one piece seat and back.

Frame:

- 4 leg - tubular steel.
- Chrome finish.

Seat and back:

- Fully upholstered.

Options:

- Choice of fabric (refer to page 26).

Weight:

- 120kg.

Warranty:

- 5 year.



ALDER

Beam

Features:

- Stackable.

Frame:

- Sled - rod steel.
- Chrome finish.

Seat and back:

- Polypropylene.
- Colours: Blue, burgundy or red.

Weight:

- 110kg.

Warranty:

- 1 year.



BE

BE

Belair



BELVIS

Features:

- Black back upright support.
- Dual layer commercial grade back foam with lumber support.
- Medium back.
- Moulded seat foam.

Frame:

- Cantilever - tubular steel.
- Black powder coat finish.

Seat and back:

- Upholstered back with polypropylene outer.
- Upholstered seat with polypropylene under pan.

Options:

- Choice of fabric (refer to page 26).

Weight:

- 120kg.

Warranty:

- 5 year.



Belair Arm



BELVISA

Features:

- Chrome back upright support.
- Dual layer commercial grade back foam with lumber support.
- Medium back.
- Moulded seat foam.
- Polyurethane arm pads.

Frame:

- Cantilever - tubular steel.
- Chrome finish.

Seat and back:

- Upholstered back with polypropylene outer.
- Upholstered seat with polypropylene under pan.

Options:

- Choice of fabric (refer to page 26).

Weight:

- 120kg.

Warranty:

- 5 year.



Casey

Features:

- Dual layer memory foam seat.
- Stackable.

Frame:

- 4 leg - tubular steel.
- Graphite ripple powder coat finish.

Seat and back:

- Fully upholstered.

Options:

- Choice of fabric (refer to page 26).

Weight:

- 150kg.

Warranty:

- 5 year.



CASEY

Concept

Features:

- Commercial grade foam.
- Polyurethane arms.
- Two piece ply.

Frame:

- Cantilever - tubular steel.
- Black powder coat finish.

Seat and back:

- Fully upholstered.

Options:

- Choice of fabric (refer to page 26).
- Chrome finish.

Weight:

- 120kg.

Warranty:

- 5 year.



CONVIC
with optional chrome finish

Evo



EVOARM/S
Seat upholstery
with optional arms



EVOVIS
No upholstery



EVOVIS/S
Seat upholstery

Features:

- Curved back for support and comfort.
- Stackable.

Frame:

- 4 leg - tubular steel.
- Black powder coat finish.

Seat and back:

- Black moulded polypropylene.

Options:

- Choice of fabric (refer to page 26).
- Closed arms.
- Seat upholstery.

Weight:

- 110kg.

Warranty:

- 5 year.



Flute 4 Leg



FLU4/SB
Seat and back upholstery



FLU4
No upholstery



FLU4/S
Seat upholstery

Features:

- Stackable.

Frame:

- 4 leg - tubular steel.
- Silver powder coat finish.

Seat and back:

- Black polypropylene.

Options:

- Choice of fabric (refer to page 26).
- Seat and or back upholstery.
- Trolley - 16 chair.

Weight:

- 100kg.

Warranty:

- 1 year.



Flute Sled

Features:

- Stackable.

Frame:

- Sled - rod steel.
- Chrome finish.

Seat and back:

- Black polypropylene.

Options:

- Choice of fabric (refer to page 26).
- Seat and or back upholstery.
- Trolley - 16 chair.

Weight:

- 100kg.

Warranty:

- 1 year.



FLUSL/SB
Seat and back upholstery



FLUSL
No upholstery



FLUSL/S
Seat upholstery

Haley Sled

Features:

- Linkable glides.
- Mesh look back.
- Stackable.
- Two piece polypropylene seat.

Frame:

- Sled - rod steel.
- Chrome finish.

Seat and back:

- Polypropylene.
- Colours: Black, blue, green, grey, red or white.

Options:

- Choice of fabric (refer to page 26).
- Chrome frame with open arm and polypropylene pad.
- Seat and or back upholstery.
- Trolley - 15 chair.

Weight:

- 110kg.

Warranty:

- 5 year.



HALS/S
Seat upholstery



HALS
No upholstery



HALSARM
Haley sled with arms



Hunter



HUN/SB
Seat and back upholstery



HUNPP
No upholstery



HUN/S
Seat upholstery

Features:

- AFRDI Level 4.
- Stackable.

Frame:

- Sled - rod steel.
- Chrome finish.

Seat and back:

- Moulded polypropylene.
- Colours: Black or white.

Options:

- Choice of fabric (refer to page 26).
- Chrome underseat basket (basket not tested by AFRDI).
- Link connectors (link connectors not tested by AFRDI).
- Seat and or back upholstery (not tested by AFRDI).
- Trolley - 20 chair (not tested by AFRDI).

Weight:

- 110kg.

Warranty:

- 5 year.



Jupiter



JUPV

Features:

- AFRDI Level 6.
- Aluminum arms with upholstered insert.
- Tri layer commercial grade back foam with lumber support.
- Tri layer seat foam.
- Two piece ply.

Frame:

- Cantilever - tubular steel.
- Chrome finish.

Seat and back:

- Fully upholstered.

Options:

- Choice of fabric (refer to page 26).

Weight:

- 120kg.

Warranty:

- 5 year.



Laser

Features:

- Commercial grade foam.
- Cosmetic stitching.
- One piece ply.

Frame:

- 4 leg - tubular steel.
- Chrome finish.

Seat and back:

- Fully upholstered.

Options:

- 4 leg frame with no arms.
- Choice of fabric (refer to page 26).
- Sled base frame with arms.

Weight:

- 150kg.

Warranty:

- 5 year.



LAS
4 leg arms



LASNA
4 Leg with no arms



LASS
Sled with arms

Luxo

Features:

- Commercial grade foam.
- Contour shaped back.
- Polypropylene arm pads.
- Two piece ply shell.

Frame:

- Cantilever - tubular steel.
- Chrome finish.

Seat and back:

- Fully upholstered.

Options:

- Choice of fabric (refer to page 26).

Weight:

- 110kg.

Warranty:

- 3 year.



LUXO



Proudly 100%
Australian Owned

ENQUIRES: 03 9761 7110
WWW.OFFICESEATING.COM.AU

Maddison 4 Leg



MV
Round back



MVSQ/C
Square back with optional chrome finish

Features:

- Commercial grade foam.
- Stackable.

Frame:

- 4 leg - welded tubular steel.
- Black powder coat finish.

Seat and back:

- Fully upholstered.

Options:

- Choice of fabric (refer to page 26).
- Chrome finish.
- Non-slip rubber feet.
- Round or square back.

Weight:

- 150kg.

Warranty:

- 5 year.



Maddison 4 Leg Arm



MVASQ/C
Square back straight arm with optional chrome finish



MVA
Round back straight arm

Features:

- Commercial grade foam.
- Polyurethane straight arms.
- Stackable.

Frame:

- 4 leg - welded tubular steel.
- Black powder coat finish.

Seat and back:

- Fully upholstered.

Options:

- Choice of fabric (refer to page 26).
- Chrome finish.
- Non-slip rubber feet.
- Round or square back.

Weight:

- 150kg.

Warranty:

- 5 year.



Maddison 4 Leg Drop Arm

Features:

- Commercial grade foam.
- Polyurethane drop arms.
- Stackable.

Frame:

- 4 leg - welded tubular steel.
- Black powder coat finish.

Seat and back:

- Fully upholstered.

Options:

- Choice of fabric (refer to page 26).
- Chrome finish.
- Non-slip rubber feet.
- Round or square back.

Weight:

- 150kg.

Warranty:

- 5 year.



MVDA
Round back drop arm



MVDASQ/C
Square back drop arm
with optional chrome finish

Maddison Sled

Features:

- Commercial grade foam.
- Stackable.

Frame:

- Sled - welded tubular steel.
- Black powder coat finish.

Seat and back:

- Fully upholstered.

Options:

- Choice of fabric (refer to page 26).
- Chrome finish.
- Round or square back.

Weight:

- 150kg.

Warranty:

- 5 year.



MVSSQ/C
Square back sled
with optional chrome finish



MVS
Round back sled

Maddison Sled Arm



MVSA
Round back sled straight arm



MVSASQ/C
Square back sled straight arm
with optional chrome finish

Features:

- Commercial grade foam.
- Polyurethane straight arms.

Frame:

- Sled - welded tubular steel.
- Black powder coat finish.

Seat and back:

- Fully upholstered.

Options:

- Choice of fabric (refer to page 26).
- Chrome finish.
- Round or square back.

Weight:

- 150kg.

Warranty:

- 5 year.



Maddison Sled Drop Arm



MVSDASQ/C
Square back sled drop arm
with optional chrome finish



MVSDA
Round back sled drop arm

Features:

- Commercial grade foam.
- Polyurethane drop arms.

Frame:

- Sled - welded tubular steel.
- Black powder coat finish.

Seat and back:

- Fully upholstered.

Options:

- Choice of fabric (refer to page 26).
- Chrome finish.
- Round or square back.

Weight:

- 150kg.

Warranty:

- 5 year.



Moona

Features:

- Commercial grade foam.
- Cosmetic stitching.
- One piece ply.
- Stackable.

Frame:

- Sled - tubular steel.
- Chrome finish.

Seat and back:

- Fully upholstered.

Options:

- Choice of fabric (refer to page 26).

Weight:

- 150kg.

Warranty:

- 3 year.



MOONA

Moona Arm

Features:

- Commercial grade foam.
- Cosmetic stitching.
- One piece ply.
- Polyurethane arms.

Frame:

- Sled - tubular steel.
- Chrome finish.

Seat and back:

- Fully upholstered.

Options:

- Choice of fabric (refer to page 26).

Weight:

- 150kg.

Warranty:

- 3 year.



MOONARM



Nero



NEROARM/SB
Seat and back upholstery
with optional arms



NERO/C
No upholstery
with optional chrome finish



NERO/S
Seat upholstery

Features:

- AFRDI Level 6.
- AFRDI Sustainability green tick.
- Linkable (without arms).
- Mesh look back.
- Stackable.



Frame:

- 4 leg - tubular steel.
- Black powder coat finish.

Seat and back:

- Polypropylene.
- Colours: Black, blue, fawn, green, grey, red or white.

Options:

- Choice of fabric (refer to page 26).
- Chrome finish.
- Linking clips for arms (optional linking clip not tested by AFRDI).
- Polypropylene arms (arms not tested by AFRDI).
- Seat and or back upholstery (not tested by AFRDI).

Weight:

- 110kg.

Warranty:

- 5 year.



Nova



NOVA

Features:

- Commercial grade seat foam.
- Lift folding seat.
- Linkable.
- Stackable vertical and horizontal.

Frame:

- 4 leg - tubular steel.
- Chrome finish.

Seat and back:

- Black polypropylene back.
- Upholstered seat with polypropylene under pan.

Options:

- Choice of fabric (refer to page 26).
- Back upholstery.

Weight:

- 120kg.

Warranty:

- 3 year.



Nova Arm

Features:

- Commercial grade seat foam.
- Lift folding seat.
- Polypropylene arms.
- Stackable vertical and horizontal.

Frame:

- 4 leg - tubular steel.
- Chrome finish.

Seat and back:

- Black polypropylene back.
- Upholstered seat with polypropylene under pan.

Options:

- Choice of fabric (refer to page 26).
- Back upholstery.

Weight:

- 120kg.

Warranty:

- 3 year.



NOVAARM

Oxford Mesh

Features:

- Commercial grade foam.
- Polypropylene arms.

Frame:

- 4 leg - tubular steel.
- Chrome finish.

Seat and back:

- Mesh back.
- Upholstered seat - black fabric.
- Polypropylene under pan.

Options:

- Alternate seat upholstery.
- Choice of fabric (refer to page 26).
- Chrome cantilever frame.

Weight:

- 110kg.

Warranty:

- 2 year.



OXMESH4
4 leg



OXMESHC
Cantilever



Portsea



PLBV

Features:

- Aluminum arms with polyurethane insert.
- Commercial grade foam.

Frame:

- Cantilever - tubular steel.
- Black powder coat finish.

Seat and back:

- Fully upholstered.

Options:

- Choice of fabric (refer to page 26).
- Chrome finish.

Weight:

- 120kg.

Warranty:

- 5 year.



Precept



PREV



PREDELV

Precept deluxe with padded seat and back

Features:

- Cosmetic stitching.
- Fixed chrome arms with removable arm pad.

Frame:

- Cantilever - tubular steel.
- Chrome finish.

Seat and back:

- Fully upholstered - black vinyl.

Options:

- Precept deluxe model.

Weight:

- 120kg.

Warranty:

- 3 year.



Riley

Features:

- Antibacterial moulded seat foam.
- Black polyurethane arm rests.
- Extra wide seat and back.

Frame:

- 4 leg - heavy duty welded tubular steel.
- Powder coat finish.
- Colours: Beige, graphite ripple or silver.

Seat and back:

- Fully upholstered.

Options:

- Choice of fabric (refer to page 9).
- Low or high back.

Weight:

- 160kg.

Warranty:

- 5 year.



RILV02
High back with
graphite ripple finish



RILV01
Low back with
graphite ripple finish

Rod

Features:

- Commercial grade foam.
- Stackable.
- Two piece back ply.

Frame:

- Sled - rod steel.
- Chrome finish.

Seat and back:

- Fully upholstered.

Options:

- Choice of fabric (refer to page 26).

Weight:

- 150kg.

Warranty:

- 3 year.



ROD



Rod Arm



RODA

Features:

- Commercial grade foam.
- Stackable.
- Two piece back ply.
- Upholstered arm pads.

Frame:

- Sled - rod steel.
- Chrome finish.

Seat and back:

- Fully upholstered.

Options:

- Choice of fabric (refer to page 26).

Weight:

- 150kg.

Warranty:

- 3 year.



Solo



SOLO/B

Features:

- Linkable glides.
- Mesh look back.
- Stackable.

Frame:

- Sled - rod steel.
- Chrome finish.

Seat and back:

- Moulded polypropylene.
- Colours: Black or white.

Options:

- Chrome underseat book rack.
- Trolley - 20 chair.

Weight:

- 110kg.

Warranty:

- 5 year.



Star

Features:

- Commercial grade foam.

Frame:

- Cantilever - tubular steel.
- Black powder coat finish.

Seat and back:

- Fully upholstered.

Options:

- Choice of fabric (refer to page 26).
- Chrome finish.

Weight:

- 150kg.

Warranty:

- 3 year.



SV/C
with optional chrome frame

Star Arm

Features:

- Commercial grade foam.
- Polyurethane arm pads.

Frame:

- Cantilever - tubular steel.
- Black powder coat finish.

Seat and back:

- Fully upholstered.

Options:

- Choice of fabric (refer to page 26).
- Chrome finish.

Weight:

- 150kg.

Warranty:

- 3 year.



SVA



Star Stackable



SS

Features:

- Commercial grade foam.
- Spring steel tubular frame.
- Stackable.

Frame:

- Cantilever - tubular steel.
- Black powder coat finish.

Seat and back:

- Fully upholstered.

Options:

- Choice of fabric (refer to page 26).
- Chrome finish.

Weight:

- 110kg.

Warranty:

- 3 year.



Studio



STV02

Features:

- Back lumbar support.
- Commercial grade foam.
- Polypropylene arm pads.
- Two piece ply.

Frame:

- Cantilever - tubular steel.
- Chrome finish.

Seat and back:

- Fully upholstered.

Options:

- Choice of fabric (refer to page 26).

Weight:

- 150kg.

Warranty:

- 5 year.



Tess

Features:

- Aluminum 4 way base with black glides.
- Moulded foam.
- Steel inner frame.
- Swivel mechanism with height adjustment.

Seat and back:

- Fully upholstered.

Options:

- Aluminum dome style base.
- Choice of fabric (refer to page 26).

Weight:

- 120kg.

Warranty:

- 5 year.



TESSBASE



TESSDOME

Tess 4 Leg

Features:

- Moulded foam.
- Steel inner frame.

Frame:

- 4 Leg - tubular steel.
- Chrome finish.

Seat and back:

- Fully upholstered.

Options:

- Choice of fabric (refer to page 26).

Weight:

- 120kg.

Warranty:

- 5 year.



TESSVIS



Titan



TITAN

Features:

- Moulded foam.
- Steel inner frame.
- Polished aluminum legs.

Seat and back:

- Fully upholstered.

Options:

- Choice of fabric (refer to page 26).

Weight:

- 120kg.

Warranty:

- 5 year.



Titan Arm



TITAN/A

Features:

- Moulded foam.
- Steel inner frame with arms.
- Polished aluminum legs.

Seat and back:

- Fully upholstered.

Options:

- Choice of fabric (refer to page 26).

Weight:

- 120kg.

Warranty:

- 5 year.



Tivoli

Features:

- Aluminum arms with polyurethane insert.
- Back lumbar support.
- Commercial grade foam.
- Cosmetic stitching.

Frame:

- Cantilever - tubular steel.
- Black powder coat finish.

Seat and back:

- Fully upholstered.

Options:

- Choice of fabric (refer to page 26).
- Chrome finish.

Weight:

- 120kg.

Warranty:

- 5 year.



TLV

Yarra

Features:

- Stackable.

Frame:

- Sled - rod steel.
- Chrome finish.

Seat and back:

- Black polypropylene.

Options:

- Choice of fabric (refer to page 26).
- Seat and or back upholstery.
- Trolley - 20 chair.

Weight:

- 110kg.

Warranty:

- 2 year.



YAR/SB
Seat and back upholstery



YAR/PP
No upholstery



YAR/S
Seat upholstery



Yarra Arm



YARARM
No upholstery

Features:

- Open arms with polypropylene pads.
- Stackable.

Frame:

- Sled - rod steel.
- Chrome finish.

Seat and back:

- Black polypropylene.

Options:

- Choice of fabric (refer to page 26).
- Seat and or back upholstery.
- Trolley - 20 chair.

Weight:

- 110kg.

Warranty:

- 2 year.



Zarah



ZARA/SB
Seat and back upholstery
with optional arms



ZAR
No upholstery



ZARA/S
Seat upholstery

Features:

- Linkable (without arms).
- Mesh look back.
- Stackable.

Frame:

- 4 leg - tubular steel.
- Black powder coat finish.

Seat and back:

- Black polypropylene.
- Colours: Black, blue, grey, red or white.

Options:

- Choice of fabric (refer to page 26).
- Chrome finish.
- Linking clips.
- Polypropylene arms.
- Seat and or back upholstery.

Weight:

- 110kg.

Warranty:

- 3 year.



Zoe

Features:

- BIFMA Approved.
- Fixed "T" arms.



Frame:

- Cantilever - tubular steel.
- Grey powder coat finish.

Seat and back:

- Mesh back.
- Polypropylene under pan.
- Upholstered seat - black fabric.

Options:

- Alternate seat upholstery.
- Choice of fabric (refer to page 26).
- Without arms.

Weight:

- 100kg.

Warranty:

- 3 year.



ZOEVIS

All chairs are 100% Australian manufactured to the highest standard and incorporate the following premium materials:

- Commercial grade timber and steel frames.
- Premium commercial grade foam.
- Upholstered covers are overlapped where required to stop fraying.
- Upholstered covers are top stitched for additional strength where required.
- For a complete list of sizes and dimensions please visit www.officeseating.com.au
- All products are suitable for multiple applications, ranging from but not limited to education, general office, healthcare and hospitality.

Due to our policy of continuous product improvement, O.S.A Pty. Ltd. reserves the right to make changes on specifications without notice.



Proudly 100%
Australian Owned

ENQUIRES: 03 9761 7110
WWW.OFFICESEATING.COM.AU

OSA House Fabrics

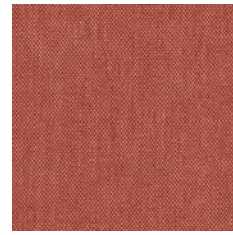
Fabric colours shown are an indication and should only be used as a guide.



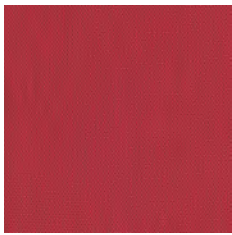
Birch



Citrus



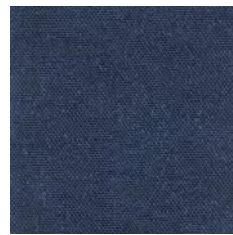
Fire



Poppy



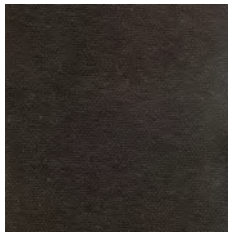
Teal



Navy



Falcon



Carbon



**Hathaway
Charcoal**



**Hathaway
Navy**

Content: 100% Polyester **Width:** 137cm

Performance: Heavy Commercial

Fabric Suppliers

Innova: innova.com.au
Instyle: instyle.com.au
Laine: laine.com.au
Sustainable Living: sustainablelivingfabrics.com.au
Macquarie: macquarietextiles.com.au

Svenska: svenskakj.com.au
Vyfab: vyfab.com
Warwick: warwick.com.au
Wortley: wgshowroom.com.au
Woven Image: wovenimage.com

Most commonly used fabric suppliers.



Beam Seating



Clerical & Managerial



Education



Executive



Healthcare



Hospitality



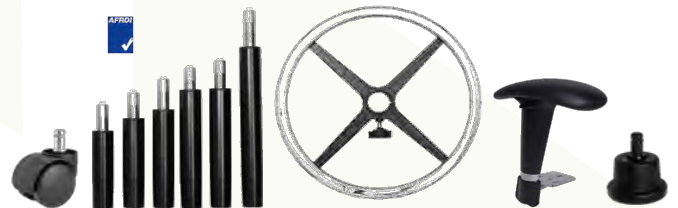
Ottoman



Soft Furnishings



Stools



Accessories



Distributed by:



YOUR SEATING SOLUTION SPECIALISTS

© 2017 OSA All Rights Reserved

Rev_VIS003