



**E-DESK**

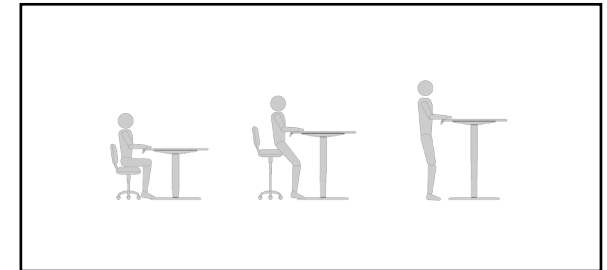
*Height Adjustable Range*





## E-DESK

*Introduction to Height Adjustable Technology*



Height adjustable or 'sit / stand' desks are the new standard for ergonomic furniture in today's office space environment. This technology affords you both comfort and optimal posture throughout the day; Helping to prevent fatigue, improve your output & avoid injury. Powered, telescopic legs raise & lower the work top to your desired height effortlessly. With three memory positions you're able to shift from sit to stand and hundreds of positions in between in seconds. Transitioning between memorised positions is efficient and easy allowing you to maintain your productivity and flow uninterrupted.

Melbourne Desk Company now offer a wide range of variable height desk solutions that cater to all styles and budgets including complete office suites specifically designed to match seamlessly with your new E-DESK.



**E-DESK**  
*Essential*



**E-DESK ESSENTIAL**  
*Pictured in Fox Teakwood*

**L:** 1800, 2100, 2400  
**D:** 700(MIN)  
**H:** 650(MIN) 1300(MAX)

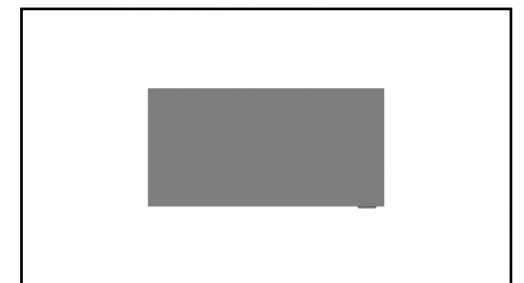
Frame available in both black & white

Contrasting edging available

Digital LED Controller with 3 programmable  
memory presets & Timer Reminder

Adjustable Feet

Safety Collision Avoidance System



**E-DESK ESSENTIAL SPLAY**

*Pictured in Natural Walnut*

Also available in Curved Splay

**L:** 1800, 2100

**W:** 1800

**D:** 700(MIN)

**H:** 650(MIN) 1300(MAX)

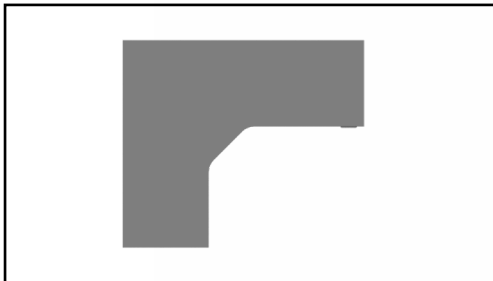
Frame available in both black & white

Contrasting edging available

Digital LED Controller with 3 programmable  
memory presets & Timer Reminder

Adjustable feet

Safety Collision Avoidance System



**E-DESK EXECUTIVE OFFICE**

*Pictured in Black over Sublime Teak*

*OVERALL DIMENSIONS*

**L:** 3000

**W:** 2400

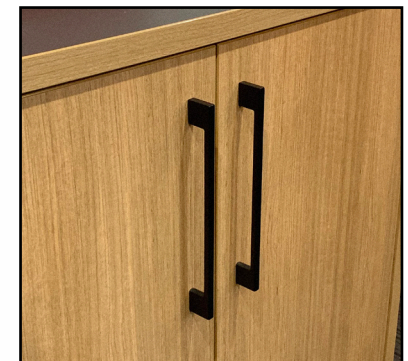
**H:** 650(MIN) 1300(MAX)



*DIGITAL LED CONTROLLER*



*UNIQUE CABLE MANAGEMENT*



*HIGHLY CUSTOMISABLE*



**E-DESK EXECUTIVE**

*Pictured in Jarrah Legno*

Available with or without return space

**L:** 1800, 2100, 2400

**W:** 900

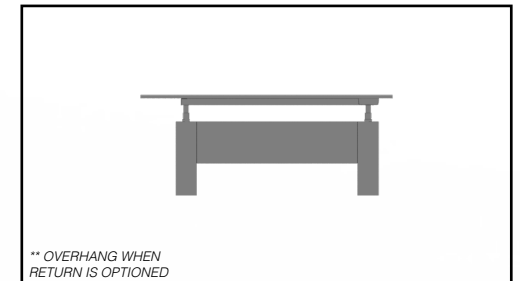
**H:** 650(MIN) 1300(MAX)

Frame available in both black & white

Contrasting top & edging colours available

Digital LED Controller with 3 programmable  
memory presets & Timer Reminder

Safety Collision Avoidance System





**EXECUTIVE LOW RIDERS**

*Pictured in Sublime Teak*



**W: 470**

**D: 560**

**H: 580(1P+1S+1F)**

**530(1S+1F)**

Soft close drawers\*

White or black handles available

*\*Pencil Utility Drawer Not Soft Close*

**EXECUTIVE REAR STORAGE**

*Pictured in Sublime Teak*

**L: 2400**

**W: 450**

**H: 900**

Chair storage

Soft close doors

Black or white handles available

Custom top & edging colours available



**EXECUTIVE RETURN CREDENZA**

*Pictured in Sublime Teak*



**L: 1950**

**W: 600**

**H: 530**

Soft close doors & drawers

Black or white handles available

Custom top & edging colours available



# E-DESK

*Additional Information*

## PRODUCT INFORMATION

- All tops 25mm
- Available in 2019 Standard Colours Range
- Frames come with a basic cable tray
- Frames & handles available in black or white
- Executive offers customizable top & edging colours
- Essential offers customizable edging colours

## ACCESSORY OPTIONS

- MDC Scallop
- 60mm Cable Entry
- 80mm Cable Entry
- Single Tier Cable Tray
- Double Tier Cable Tray

## WARRANTY

- **Top** - 10 Year
- **Frame** - 10 Year (*Structural*)
- **Electronic Motor** - 3 Year

## DISCLAIMER

Please note that all renders are only indicative of Laminex & Polytec Commercial Palettes. Swatch samples should be used for true likeness. MDC reserves the right to change specification without notice.

ISO 9001 Accredited Quality Management System  
 ISO 14001 Accredited Environmental Management System

*Pictured in Black with white edge, handles and frame*



## 2020 STANDARD COLOURS

+ E-DESK EXCLUSIVE

POLAR WHITE / WHITE 200	GHOSTGUM	PARCHMENT	MOLESKIN	ALASKAN
ARIES	FOX	TORNADO	OYSTER / LAVA GREY	FOX TEAK-WOOD
DANSK MAPLE	ROCK MAPLE	RAW BIRCHPLY	MILKWOOD	SEASONED OAK
OYSTER LINEA	POLYTEC SOFT WALNUT	CLASSIC OAK	CURLY BIRCH	YOUNG BEECH
SELECT BEECH	SILVER ASH	ELEGANT OAK	SUBLIME TEAK	POLYTEC NATURAL OAK
RURAL OAK	NATURAL WALNUT	MILANO WALNUT	JARRAH LEGNO	LICORICE LINEA
LUSTROUS ELM	BURNISHED WOOD	BLACKENED ELM	ZINCWORKS	NEW GRAPHITE
FOSSIL	GREYSTONE	BATTALION	CHARCOAL	BLACK
MANDARIN	OLYMPIA YELLOW	JUICY	OLYMPIA BLUE	PILLARBOX

